

Lithium Iron Phosphate - ENERGY STORAGE POWER BANK (high voltage)

Durasol Energi Technof Series CE-X-S series of high voltage stack-based energy storage battery is a high-tech product with multiple application scenarios which is developed by Intelenergi with battery modules, HVC box and BMS unit integrated inside, The system has 4 levels of protection strategy and supports usage of 2-6 battery modules in parallel. with stack-based installation method, the installation and O&M are simplified. It is suitable for the scenarios of household emergency power backup(power shortage, power failure, typhoons, earthquakes and other natural disasters), peak and valley price arbitrage, and self-generating and self use, and grid dispatching subsidy, etc.

Salient Features

- Homely style, elegant and beautiful
- With high voltage stack-based design, the backup energy can be expanded flexibly
- Multiple electrical protections, safe and reliable
- Adopting LFP cells, safe and stable
- Single battery 5.12KWh, it can be expanded to 30.72KWh

Parameters / TFESPB		CE-10S	CE-15S	CE-20S	CE-25S	CE-30S
System Structure						
Battery parameters	Rated voltage	204.8V	307.2V	409.6V	512V	614.4V
	Rated capacity	50 Ah	50 Ah	50 Ah	50 Ah	50 Ah
	Energy (KWH)	10.24	15.36	20.48	25.6	30.72
	Operating Voltage range	179.2~227.2V±1V	268.8~340.8V±1V	358.4~454.4V±1V	448~568V±1V	537.6~681.6V±1V
	Number of batteries in series	2pcs	3pcs	4pcs	5pcs	6pcs
	Rated voltage	204.8V	307.2V	409.6V	512V	614.4V
	Recommended Charge Current	0.5 C				
	Recommended Discharge Current	0.5 C				
	Battery type	LFP battery (LiFePO4)				
	Cell Combination	32S1P				
Protection functions	Over voltage, under voltage, over temperature, low temperature, over current, short circuit					
Self-discharge rate @25	<3% (90 days storage)					
Operating Condition	Storage temperature range	0~45°C				
	Operating temperature range	Charge 0°C ~50°C				
		Discharge -15°C ~55°C				
	Operating humidity condensing	5%~95%				
	Installation method	Stackable				
	Other function	Cell equalizer, Current limiter, LCD				
	Application	Indoor installation				
	Altitude	≤2000m				
Heat dissipation method	Natural Cooling					
Others	Cycle life	6000 cycles @ 0.5C, 80% DOD, @25°C 4000 cycles @ 0.5C, 100% DOD, @30°C				
	Dimension (L * W * H)	550*370*744 ±1mm	550*370*950 ±1mm	550*370*1216 ±1mm	550*370*1453 ±1mm	550*370*1689 ±1mm
	Weight (apprx)	119Kg	169Kg	220Kg	270Kg	321Kg
	Altitude	≤2000m				
	Communication method	RS485/CAN				
	Protection Class	IP-20				
	Matched inverter	Durasol Energi, Pylon, Growatt, Goodwe, Megarevo, Victron, New Electric, Shangweisi, Atlless, Gilong				



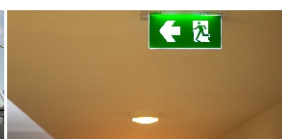
Applications



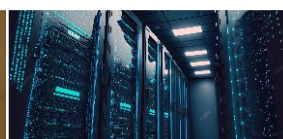
Hybrid Solar Systems



Stand alone Off Grid Solar System



Building Emergency Power



Data Centre



Grid Peak and Valley electricity
Price Arbitrage